



Eclipse FARM-4G & COMET4

- Do you want to make sure that the milk from your treated cow is free from antibiotics?
- Do you need to check that your tank milk, truck tank or silo is free from any antibiotic substance that can interfere with your production?
- Can I use transport time to analyse milk before arrival to the plant?

Eclipse & COMET4 allow any operator to perform the analysis, receive the result wherever they are and share it in real time.

One drop of milk, one minute of your time. For an automatic analysis of more than 50 antibiotic substances and with real-time results wherever you need it to.

AUTOMATIC:

- One step, add a drop of milk and run the automatic test.
- Automatic stop and interpretation of results.
- Qualitative (neg/pos) and numerical results on the screen of your smartphone or from the test4all.es platform.
- Easily realizable by any operator.

CONNECTED:

- Perform the assay anywhere you want, even on the move.
- 8 hours battery life to do the test whenever you need.
- Device & Smartphone always connected via Bluetooth and Wi-Fi: Remote access to results.



VALIDATIONS:



Eclipse Farm 4G & Comet were approved by the AOAC-RI Performance Tested Methods (PTM) Program for 29 antibiotics. (PTM License Number 022101)



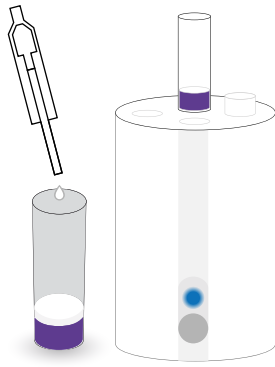
External validation by the Belgian laboratory ILVO.



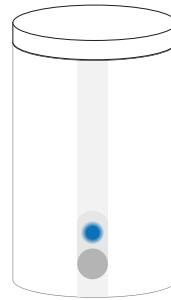
Internal validation:
according to ISO 13969:2003

Antibiotic control by anyone, at anytime and anywhere

ASSAY PROCEDURE:



1. Add sample
100µL milk



2. Result:
On the APP, email or
test4all.es platform

LIMITS OF DETECTION:

	MRL (µG/L, PPB)	LOD (µG/L, PPB)
β-lactams: Penicilins		
Penicilin G	4	2
Amoxicillin	4	3
Ampicillin	4	3
Cloxacilin	30	25
Oxacilin	30	15
β-lactams: Cephalosporins		
Cephalexin	100	50
Cephapirin	60	5
Cephalonium	20	5
Cefquinome	20	20-40
Cephaperazon	50	25
Ceftiofur	100	25
Tetracyclines		
Oxitetracycline	100	100
Tetracycline	100	100-125
Clortetracycline	100	100
Doxicycline	-	100
Sulphamides		
Sulfathiazole	100	75
Sulfadiazine	100	50
Sulfametazine	100	100-125
Sulfadimetoxine	100	75
Sulfametoxipiridazine	100	75
Aminoglycosides		
Gentamycin	100	150
Neomycin	1500	500
DH-Streptomycin	200	800
Streptomycin	200	1200
Macrolides		
Erytromycin	40	80-100
Tylosin	50	40
Lincosamides		
Lincomycin	150	150-200
Sulfones		
Dapsone	-	5
Ansamycins		
Rifaximin	60	180

LOD: Limit Of Detection (µg/L, ppb) in cow milk. MRL: Maximum Residue Limit (µg/Kg) in cow milk.